

# Cambridge Square

Cornelius, NC



BARRINGER  
HOMES

980-284-7007

[sales@barringer-homes.com](mailto:sales@barringer-homes.com)

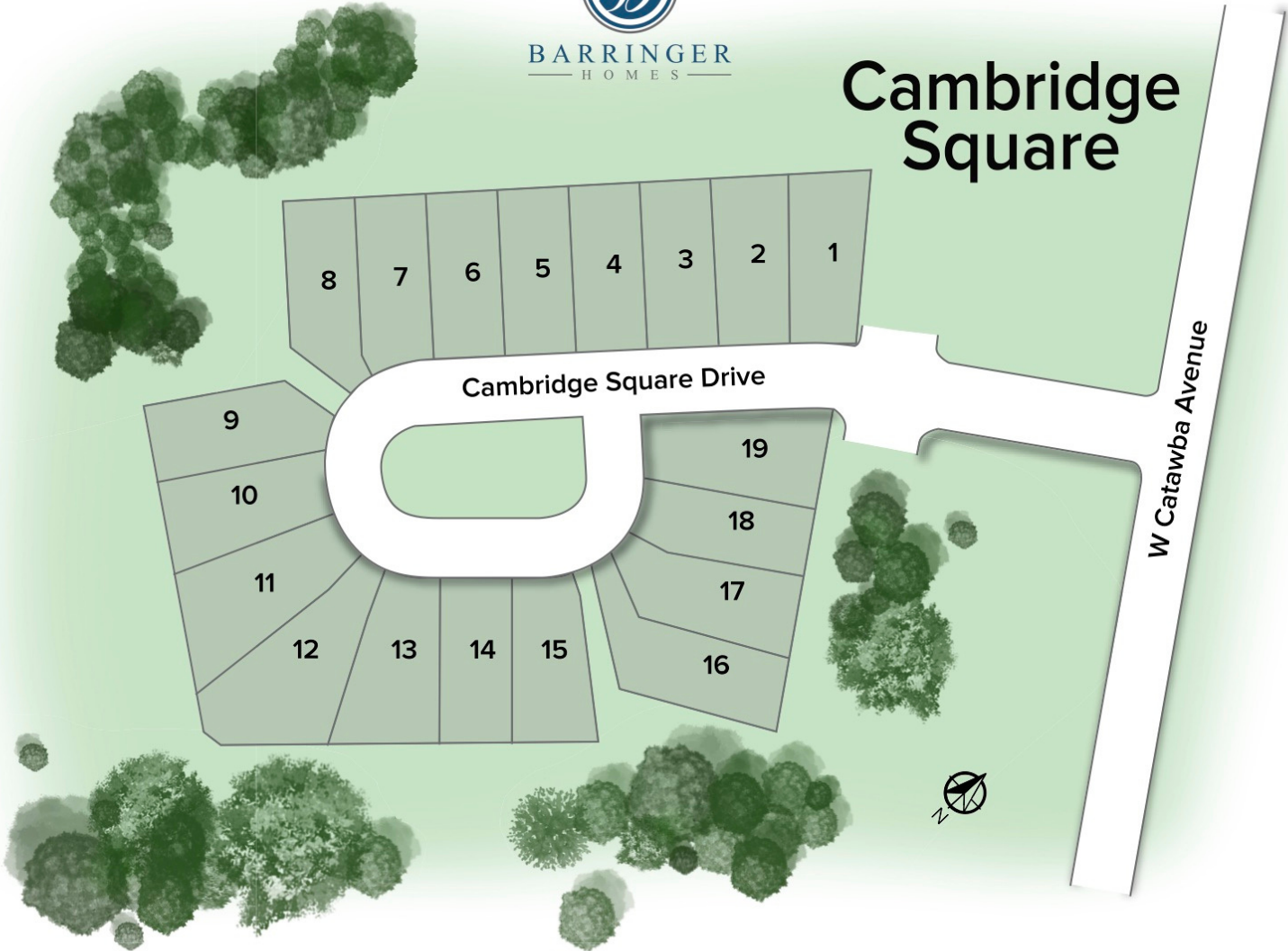
# CAMBRIDGE SQUARE

## SITE MAP



BARRINGER  
HOMES

### Cambridge Square



BARRINGER  
HOMES

980-284-7007

[sales@barringer-homes.com](mailto:sales@barringer-homes.com)

# THE COLLINS PLAN

3 BEDROOMS • 3.5 BATHROOMS • 3,082 SQ FT



Elevation C



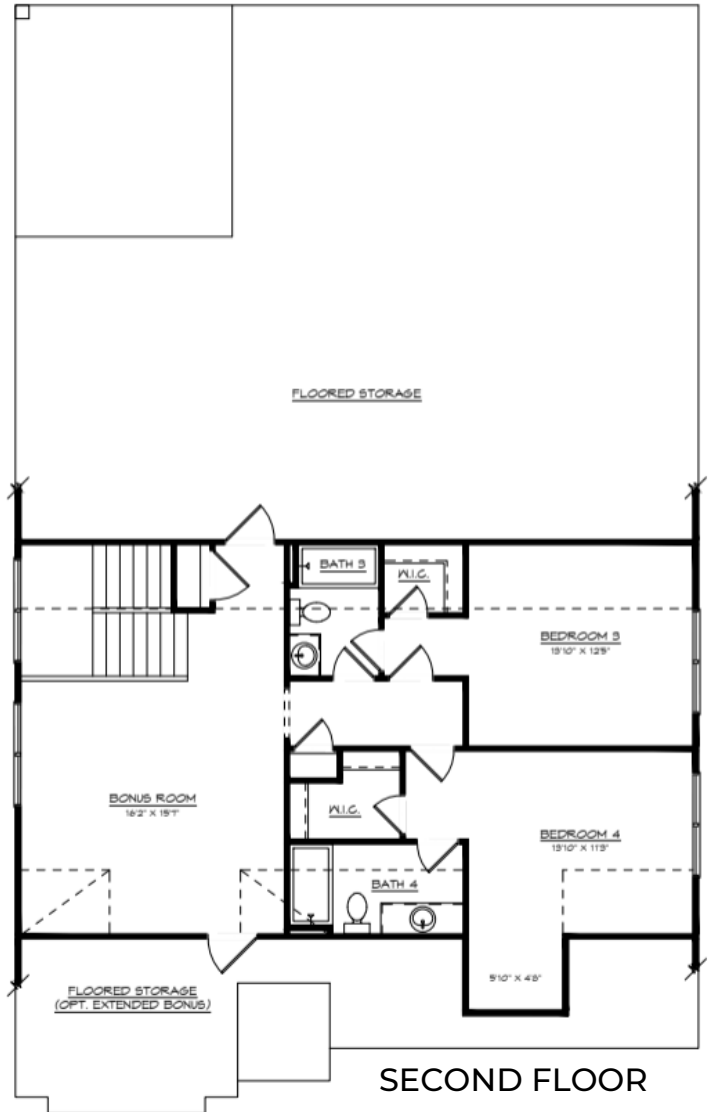
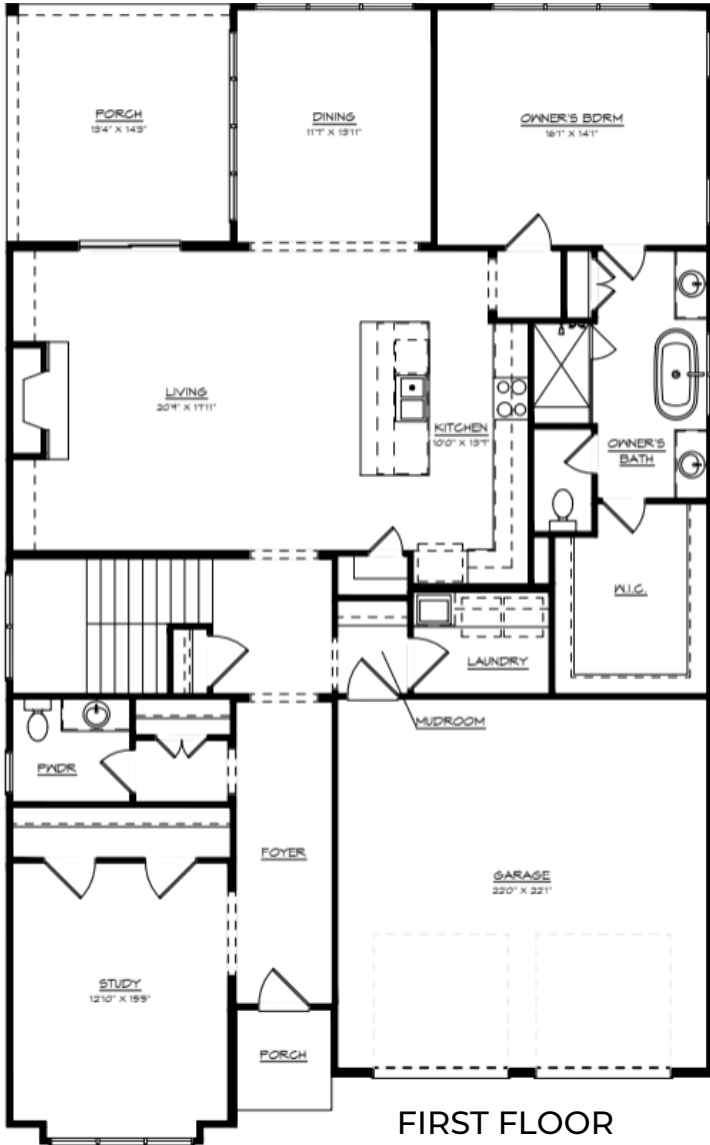
Elevation A



Elevation B

# THE COLLINS PLAN

3 BEDROOMS • 3.5 BATHROOMS • 3,082 SQ FT



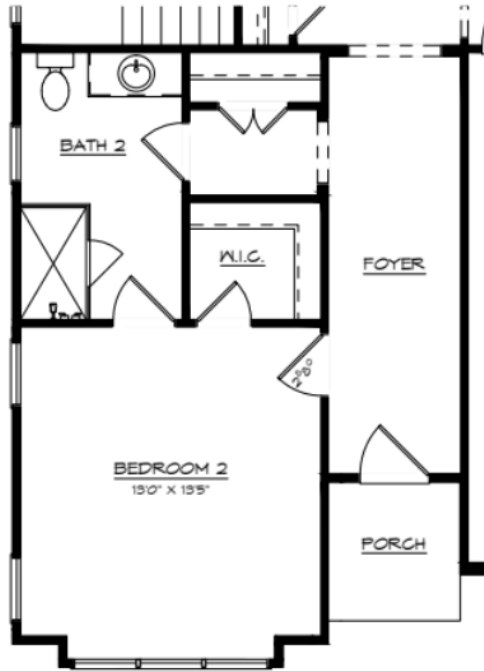
## Square Footage

First Floor.....2,022 Sq. Ft.

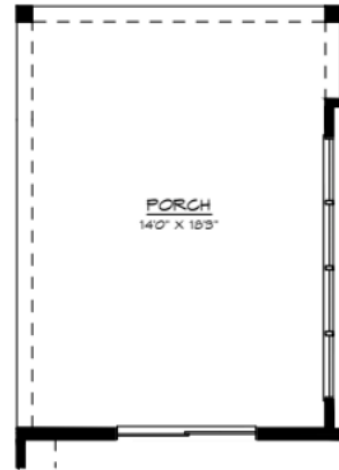
Second Floor.....1,060 Sq. Ft.

# THE COLLINS PLAN

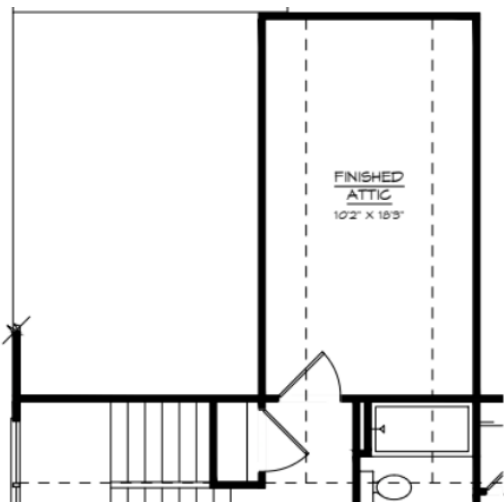
## STRUCTURAL OPTIONS



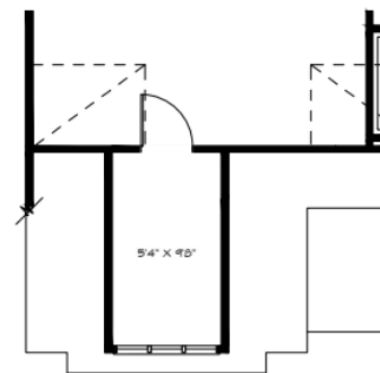
OPT. BEDROOM 2 & BATH 2



OPT. EXTENDED COVERED PORCH



OPT. FINISHED ATTIC



OPT. EXTENDED BONUS

\*Several structural options available. Please ask for pricing information\*

# THE RILEY PLAN

4 BEDROOMS • 4.5 BATHROOMS • 3,567 SQ FT



Elevation C



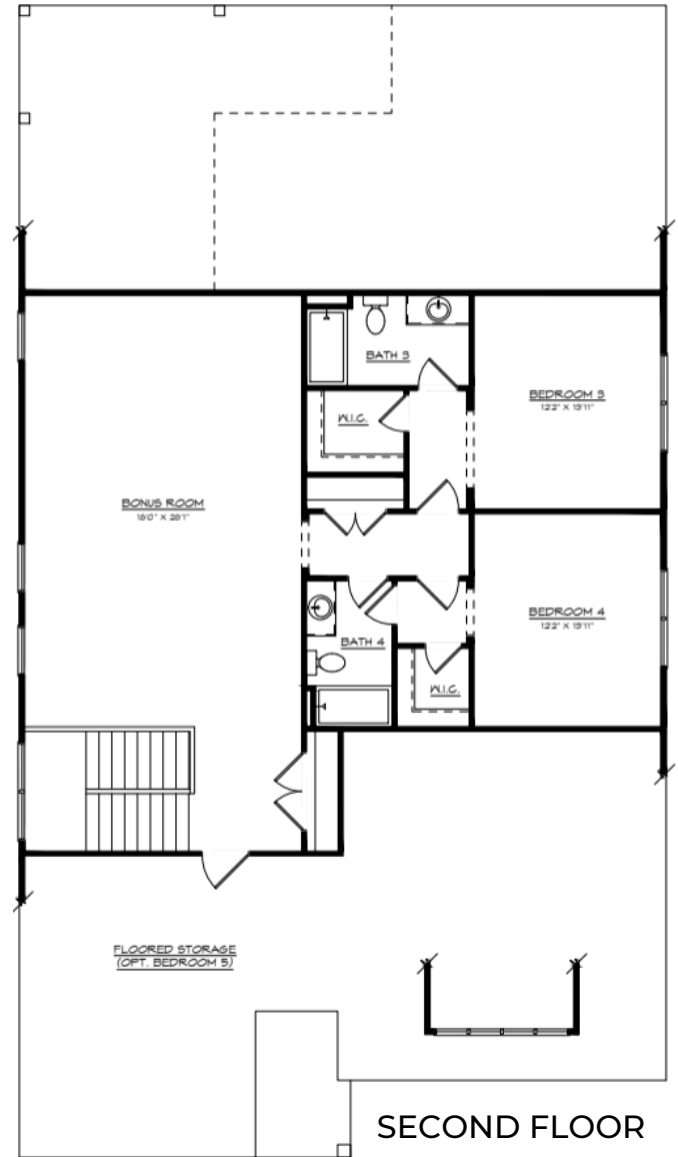
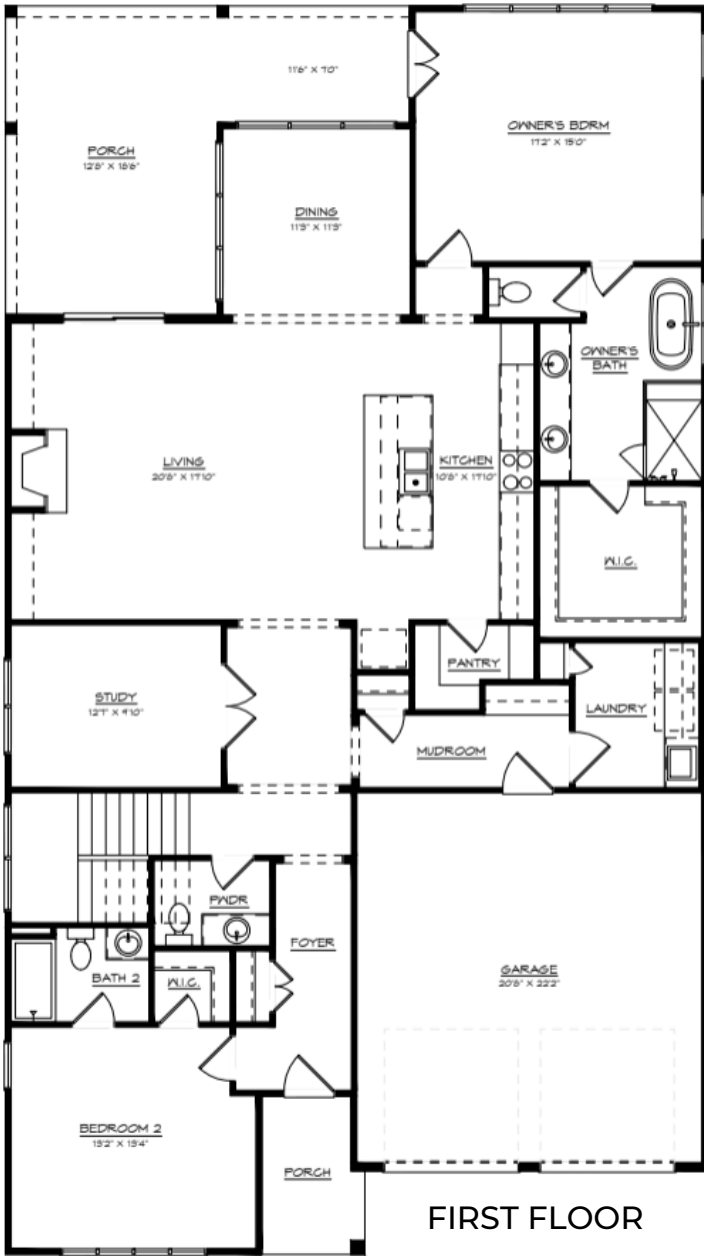
Elevation A



Elevation B

# THE RILEY PLAN

4 BEDROOMS • 4.5 BATHROOMS • 3,567 SQ FT



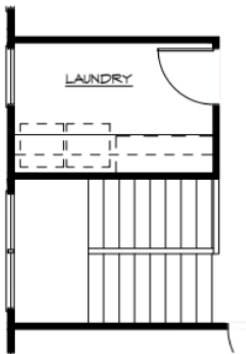
## Square Footage

First Floor.....2,193 Sq. Ft.

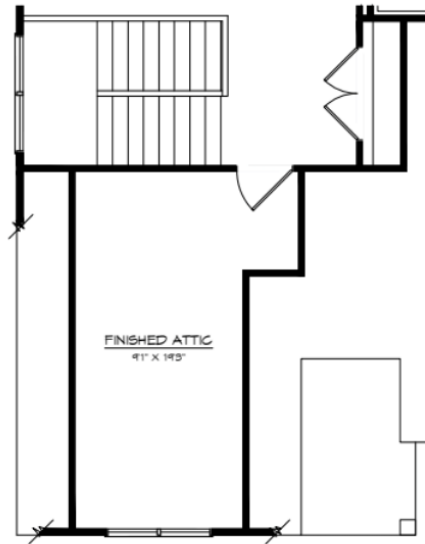
Second Floor.....1,374 Sq. Ft.

# THE RILEY PLAN

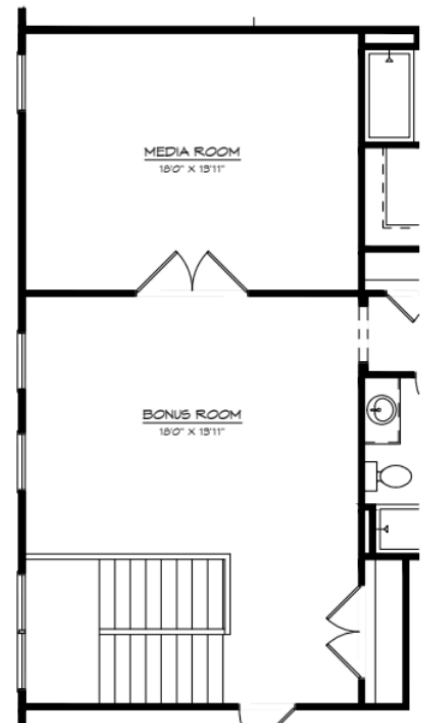
## STRUCTURAL OPTIONS



OPT. LAUNDRY AT BONUS



OPT. FINISHED ATTIC



OPT. MEDIA ROOM

\*Several structural options available. Please ask for pricing information\*



# THE JAMESON PLAN

3 BEDROOMS • 2.5 BATHROOMS • 3,375 SQ FT



Elevation C



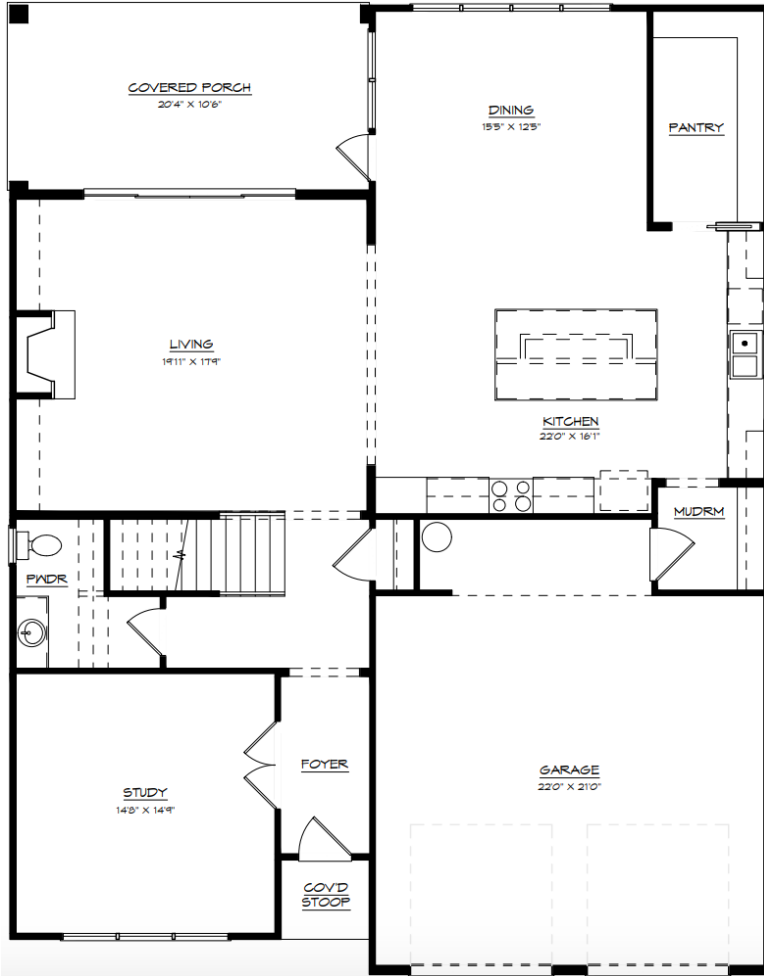
Elevation A



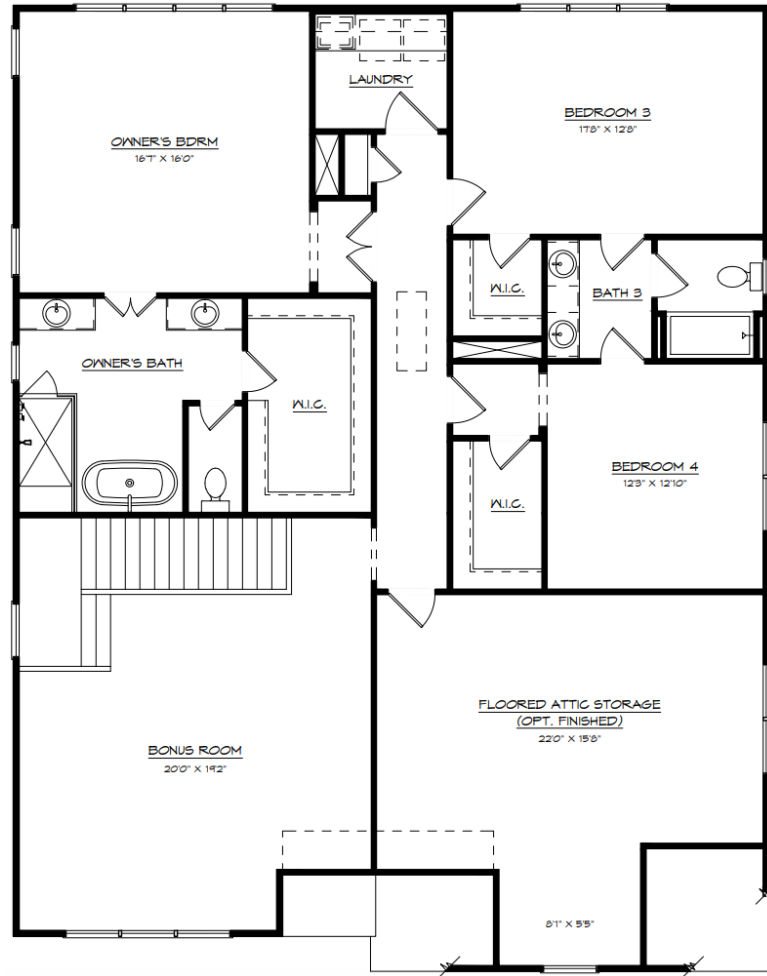
Elevation B

# THE JAMESON PLAN

3 BEDROOMS • 2.5 BATHROOMS • 3,375 SQ FT



FIRST FLOOR



SECOND FLOOR

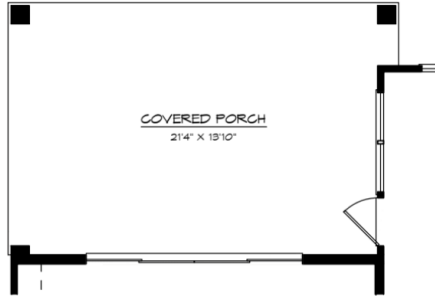
## Square Footage

First Floor.....1,549 Sq. Ft.

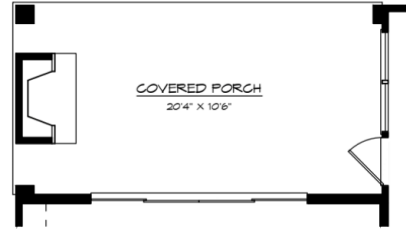
Second Floor.....1,826 Sq. Ft.

# THE JAMESON PLAN

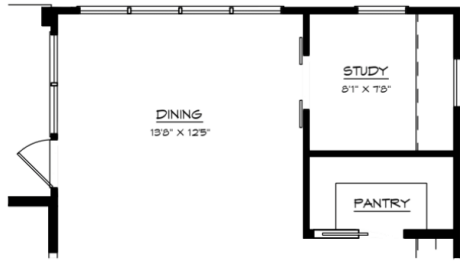
## STRUCTURAL OPTIONS



OPT. EXTENDED COVERED PORCH



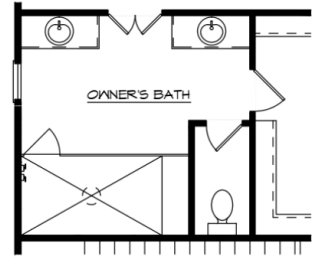
OPT. FIREPLACE AT COVERED PORCH



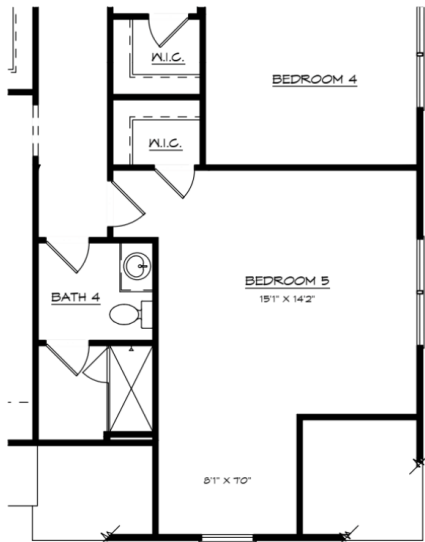
OPT. STUDY & PANTRY



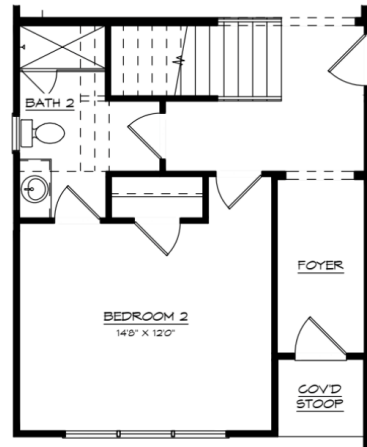
OPT. SCULLERY



OPT. SPA AT OWNER'S BATH



OPT. BEDROOM 5 & BATH 4



OPT. BEDROOM 2 & BATH 2

\*Several structural options available. Please ask for pricing information\*

# CAMBRIDGE SQUARE

## SPECIFICATIONS

### Interior Highlights

- 3 functional floor plans available, with master up or down options. Several structural options such as adding bedrooms, bathrooms, finished attics, media rooms, etc. are available
- 6.5" wide plank, engineered hardwoods throughout the first level, owner's suite, bonus room and upstairs hallways
- 10' ceilings with solid core 8' interior doors on first level, and 9' ceilings with 6'8" solid core doors on second level
- Designer kitchen cabinet layout with maple painted cabinets with shaker style doors.
- 42" upper cabinets in kitchen and 36" upper cabinets in laundry room
- Quartz and/or granite countertops, with various upgrades available
- Walk in pantry includes 5 rows of solid 16" MDF shelving
- Designer-selected tile packages throughout the home. Tile runs to the ceiling in owner's shower
- Spa-inspired owner's bath features large walk-in shower with handheld fixture in addition to the wall mounted shower head, free-standing soaking tub, and dual vanities with quartz countertops
- Moen plumbing fixtures in kitchen and bathrooms. Flo by Moen Smart Water System is an optional upgrade
- Speaker prewiring in the living room and cable prewiring in living room, bonus room, and all bedrooms
- Gas fireplace in living room
- Custom trim throughout the home including
  - 7 ¼" cove crown molding & baseboards on first floor
  - 5 ¼" cove crown molding baseboards on second floor
  - Decorative 7" headers on all windows and doors
- Nest learning thermostat on each level
- Ring doorbell

# CAMBRIDGE SQUARE

## SPECIFICATIONS

### Exterior Highlights

- Private, gated community with ample green space
- Beautiful, European-inspired homes with several elevation options available, including brick and stone upgrades
- Professionally designed landscape packages on all lots, including full sod and landscape uplighting
- Covered rear porch on all homes, with the option to include an outdoor fireplace
- Stain grade mahogany front door with 6 lite, SDL glass
- 30-year architectural asphalt shingles with 15 lb felt paper to include “ice and water shield”
- Advantech engineered, water-resistant  $\frac{3}{4}$ ” T&G subflooring
- ZIP System  $\frac{7}{16}$ ” wall sheathing
- LP TechShield Radiant Barrier roof sheathing



# CAMBRIDGE SQUARE

## AREA INFO



## CORNELIUS

Cambridge Square will be a nineteen home, gated community in Cornelius, North Carolina. Cornelius is a lakeside town with over 50 miles of Lake Norman shoreline. It is a vibrant community and a destination for some lake fun! You can rent boats, jet skis, or paddle boards at one of the marinas or explore the unique attractions, waterfront restaurants, lakeside parks and shops that Cornelius has to offer, and living in Cambridge Square means living right in the center of it all! Dine on the shores of Lake Norman at restaurants such as Hello, Sailor, spend the day shopping at Birkdale Village, or get outside and enjoy nearby parks such as Jetton Park and Ramsey Creek Park.



Listed exclusively with  
Realty ONE Group Select  
249 Williamson Rd, Suite 200  
Mooresville, NC 28117

